

C-SERT INSTALLATION INSTRUCTIONS

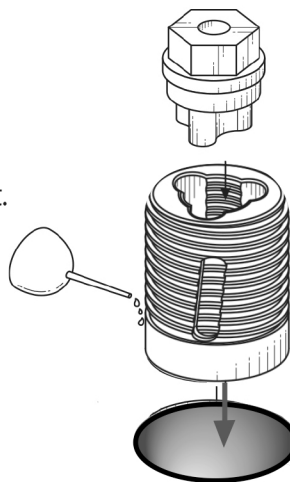
STEP 1

Drill out the damaged threads to the diameter shown on the C-Sert packaging, and slightly deeper than the length of the C-Sert.



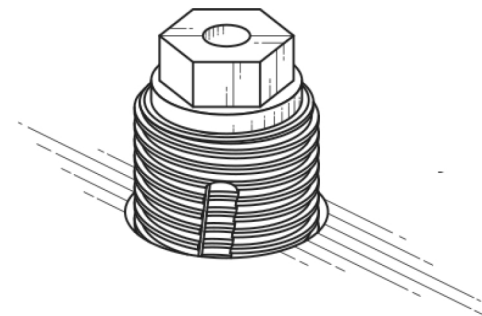
STEP 2

Apply plenty of cutting oil to the C-Sert and fit the hex-head installer into the top of the C-Sert.



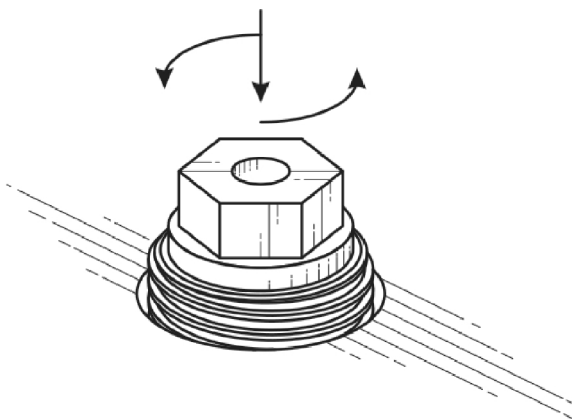
STEP 3

Put the C-Sert into the hole.



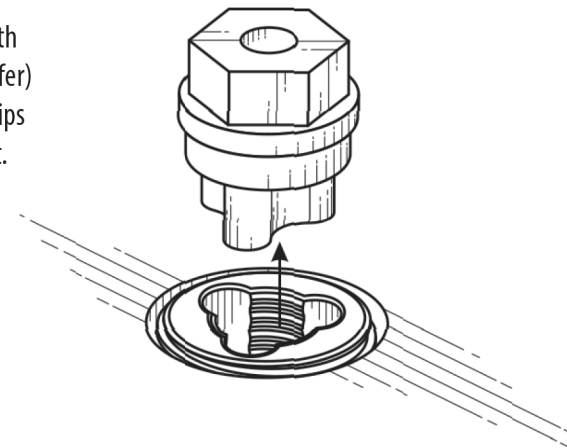
STEP 4

Give the hex-head installer 4 or 5 solid hits to seat the C-Sert fully in the pilot hole. Use a long-handled ratchet to turn the C-Sert COUNTER CLOCKWISE. Keep the ratchet horizontal, and put some downward pressure on the ratchet head. For large C-Sert sizes (7/8" and 20mm and larger) use a torque multiplier.



STEP 5

Once the top of the C-Sert is flush with the surface (or a bit below, if you prefer) remove the installer, break up the chips inside the C-Sert, and blow them out.



Patents & Patents Pending

C-Sert.com

971-347-3185